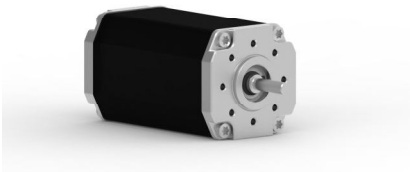


无刷电机--BL45-30, 60W

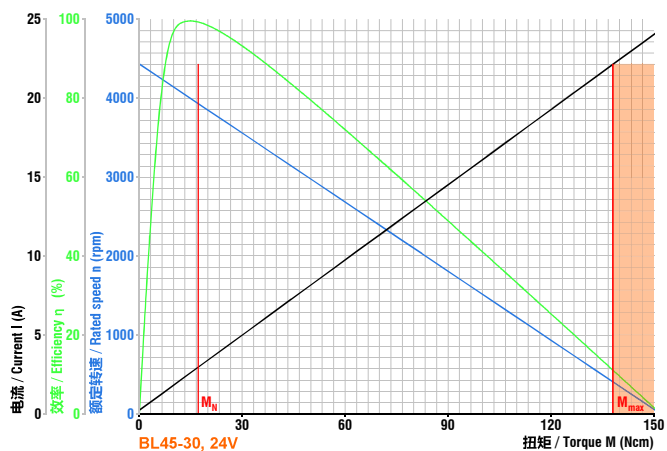


- 适配行星减速箱--Planetary gearbox available
- 适配蜗轮蜗杆减速箱--Worm gearbox available
- 适配制动器--Brake available
- 适配控制器--Controller available
- 适配编码器--Encoder available
- 更多客户要求--More request from customer

- | | |
|--|---|
| <ul style="list-style-type: none"> ▶ 60瓦, 8极高动态响应三相无刷直流电机 ▶ 需要额外的驱动器来运行电机 ▶ 可根据需求定制不同电压的绕组 ▶ 可根据需求提供不同尺寸的前轴和尾轴 ▶ 较高的功率密度和紧凑结构设计 ▶ 防护等级为IP50, 可根据需求提供更高的等级 ▶ 长寿命, 免维护, 绝缘等级E | <ul style="list-style-type: none"> ▶ 60W high dynamic 3-phase brushless DC motor 8-poles ▶ Additional electronics is needed to run this motor ▶ Special voltage windings available on request ▶ Different shaft size available for both sides on request ▶ High power density and compact design. ▶ Protection class IP50, higher class available on request ▶ Longer lifetime, maintenance-free, insulation class E |
|--|---|

24V数据和曲线--Data and curve of 24V

<p>额定电压 Nominal voltage</p> <p>额定电流 Nominal current</p> <p>额定转矩 Nominal torque</p> <p>额定转速 Nominal speed</p> <p>堵转扭矩 Stall torque</p> <p>空载转速 No load speed</p>	<p>24 VDC</p> <p>3.3 A</p> <p>17.2 Ncm</p> <p>3580 rpm</p> <p>152 Ncm</p> <p>4434 rpm</p>	<p>转矩常数 Torque constant</p> <p>终端电阻 Terminal resistance</p> <p>终端电感 Terminal inductance</p> <p>峰值电流 Peak current(2 sec.)</p> <p>转子惯量 Rotor inertial</p> <p>电机重量 Weight of motor</p>	<p>6.3 Ncm A⁻¹</p> <p>0.53 Ω</p> <p>0.43 mH</p> <p>26 A</p> <p>44 gcm²</p> <p>0.47 kg</p>
---	---	---	---



尺寸为毫米-Dimensions in mm

