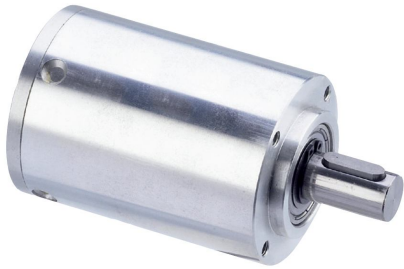


## 行星齿轮减速箱--PG60H



- ▶ 低噪声医疗级别行星减速箱
  - ▶ 高效率，长寿命，免维护
  - ▶ 钢制的内齿圈、行星齿轮架和太阳轮
  - ▶ 双滚珠轴承结构的输出轴
  - ▶ 减速箱每级行星齿轮都是斜齿
  - ▶ 第一级行星轮使用塑料材质
- ▶ Low noise, medical compatible planetary gearbox
  - ▶ Higher efficiency, longer lifetime, maintenance-free
  - ▶ Ring gear, planetary carriers and sun wheels are steel
  - ▶ Output shaft with dual ball bearings
  - ▶ All stages have helical tooth
  - ▶ Planetary gears are PVC in first stage

数据--Data												
减速比 Reduction ratio		3	4	7	10	12	16	21	30	40	49	70
效率 Efficiency		0.9				0.81						
级数 Number of stages		1				2						
连续转矩 Continuous torque	Ncm	500				2500						
减速箱重量 Weight of gearbox	kg	0.55				0.78						
轴向载荷/径向载荷 Axial load/radial load	N	500/350				500/350						
长度(L) Length(L)	mm	56				83						

