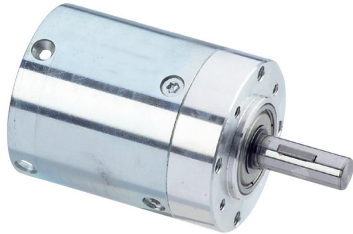


行星齿轮减速箱--PG42



- ▶ 紧凑的工业级别行星减速箱
- ▶ 高效率，长寿命，免维护
- ▶ 钢制的内齿圈、行星齿轮架和太阳轮
- ▶ 第一级行星轮使用塑料材质
- ▶ 双滚珠轴承结构的输出轴
- ▶ 减速箱每级行星齿轮都是直齿
- ▶ Compact, industry compatible planetary gearbox
- ▶ Higher efficiency, longer lifetime, maintenance-free
- ▶ Ring gear, planetary carriers and sun wheels are steel
- ▶ Planetary gears are PVC in first stage
- ▶ Output shaft with dual ball bearings
- ▶ All stages have straight tooth

数据-Data																	
减速比 Reduction ratio		4	6.25	8	16	25	32	50	64	100	128	156	200	256	313	400	512
效率 Efficiency		0.9			0.81				0.73								
级数 Number of stages		1			2				3								
连续转矩 Continuous torque	Ncm	70/350			600				1400								
减速箱重量 Weight of gearbox	kg	0.27			0.37				0.47								
轴向载荷/径向载荷 Axial load/radial load	N	150/250			150/250				150/250								
长度 (L) Length(L)	mm	47			57				70								

