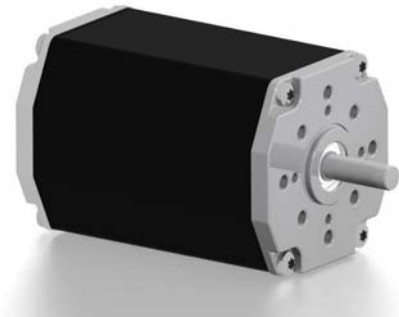


## 无刷电机--BL65-200, 200W

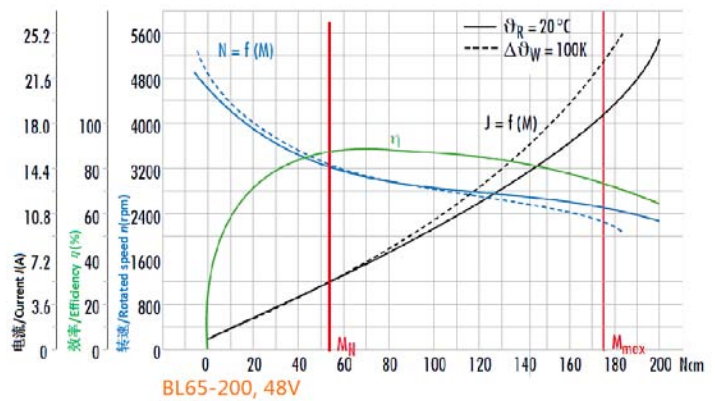


- 适配行星减速箱--Planetary gearbox available
- 适配涡轮蜗杆减速箱--Worm gearbox available
- 适配制动器--Brake available
- 适配控制器--Controller available
- 适配编码器--Encoder available
- 更多客户要求--More request from customer

- |  |   |
|--|---|
| <ul style="list-style-type: none"> <li>▶ 200瓦, 10极高动态响应三相无刷直流电机</li> <li>▶ 需要额外的驱动器来运行电机</li> <li>▶ 可根据需求定制不同电压的绕组</li> <li>▶ 可根据需求提供不同尺寸的前轴和尾轴</li> <li>▶ 较高的功率密度和紧凑结构设计</li> <li>▶ 防护等级为IP50, 可根据需求提供更高的等级</li> <li>▶ 长寿命, 免维护, 绝缘等级E</li> </ul> | <ul style="list-style-type: none"> <li>▶ 200W high dynamic 3-phase brushless DC motor 10-poles</li> <li>▶ Additional electronics is needed to run this motor</li> <li>▶ Special voltage windings available on request</li> <li>▶ Different shaft size available for both sides on request</li> <li>▶ High power density and compact design.</li> <li>▶ Protection class IP50, higher class available on request</li> <li>▶ Longer lifetime, maintenance-free, insulation class E</li> </ul> |
|--|---|

### 48V数据和曲线--Data and curve of 48V

<p>额定电压 Nominal voltage</p> <p>48 VDC</p> <p>额定电流 Nominal current</p> <p>4.9 A</p> <p>额定转矩 Nominal torque</p> <p>51 Ncm</p> <p>额定转速 Nominal speed</p> <p>3500 rpm</p> <p>堵转扭矩 Stall torque</p> <p>300 Ncm</p> <p>空载转速 No load speed</p> <p>4580 rpm</p>	<p>转矩常数 Torque constant</p> <p>8.5 Ncm A<sup>-1</sup></p> <p>终端电阻 Terminal resistance</p> <p>0.38 Ω</p> <p>终端电感 Terminal inductance</p> <p>1.15 mH</p> <p>峰值电流 Peak current(2 sec.)</p> <p>24A</p> <p>转子惯量 Rotor inertial</p> <p>91 gcm<sup>2</sup></p> <p>电机重量 Weight of motor</p> <p>1.5 kg</p>
---	---



### 尺寸为毫米-Dimensions in mm

