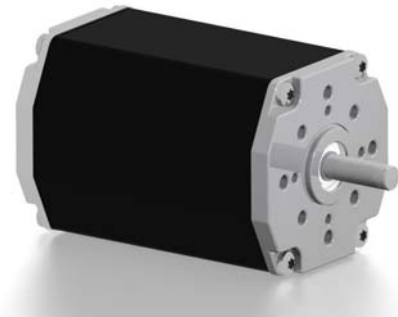


无刷电机--BL65-50, 100W

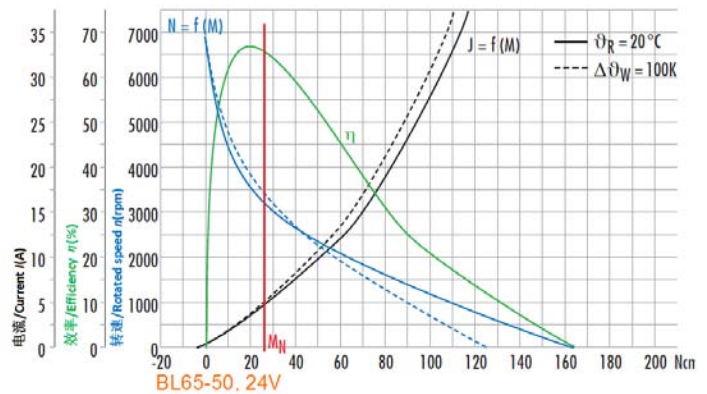


- 适配行星减速箱--Planetary gearbox available
- 适配涡轮蜗杆减速箱--Worm gearbox available
- 适配制动器--Brake available
- 适配控制器--Controller available
- 适配编码器--Encoder available
- 更多客户要求--More request from customer

- | | |
|--|---|
| <ul style="list-style-type: none"> ▶ 100瓦, 10极高动态响应三相无刷直流电机 ▶ 需要额外的驱动器来运行电机 ▶ 可根据需求定制不同电压的绕组 ▶ 可根据需求提供不同尺寸的前轴和尾轴 ▶ 较高的功率密度和紧凑结构设计 ▶ 防护等级为IP50, 可根据需求提供更高的等级 ▶ 长寿命, 免维护, 绝缘等级E | <ul style="list-style-type: none"> ▶ 100W high dynamic 3-phase brushless DC motor 10-poles ▶ Additional electronics is needed to run this motor ▶ Special voltage windings available on request ▶ Different shaft size available for both sides on request ▶ High power density and compact design. ▶ Protection class IP50, higher class available on request ▶ Longer lifetime, maintenance-free, insulation class E |
|--|---|

24V数据和曲线--Data and curve of 24V

<ul style="list-style-type: none"> 额定电压 24 VDC Nominal voltage 额定电流 5.6 A Nominal current 额定转矩 26 Ncm Nominal torque 额定转速 3100 rpm Nominal speed 堵转扭矩 163 Ncm Stall torque 空载转速 6470 rpm No load speed 	<ul style="list-style-type: none"> 转矩常数 6.2 Ncm A⁻¹ Torque constant 终端电阻 0.18 Ω Terminal resistance 终端电感 1.43 mH Terminal inductance 峰值电流 33A Peak current(2 sec.) 转子惯量 128 gcm² Rotor inertial 电机重量 1.3 kg Weight of motor
--	---



尺寸为毫米-Dimensions in mm

