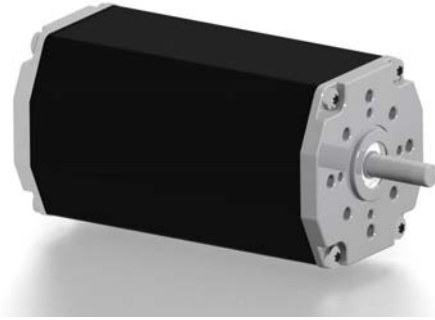


## 无刷电机--BL65-75, 150W

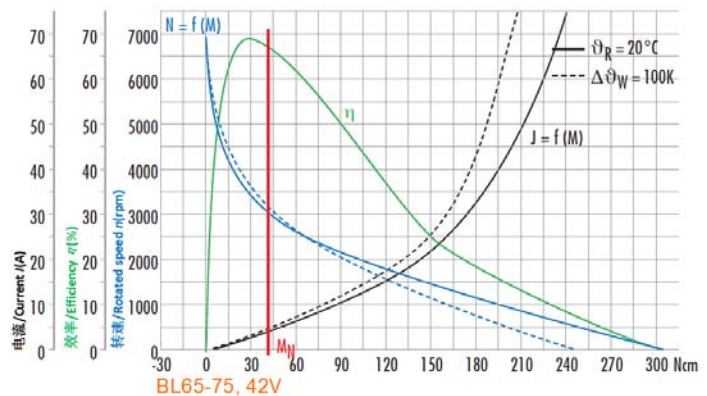


- 适配行星减速箱--Planetary gearbox available
- 适配涡轮蜗杆减速箱--Worm gearbox available
- 适配制动器--Brake available
- 适配控制器--Controller available
- 适配编码器--Encoder available
- 更多客户要求--More request from customer

- |   |   |
|---|---|
| <ul style="list-style-type: none"> <li>▶ 150瓦, 10极高动态响应三相无刷直流电机</li> <li>▶ 需要额外的驱动器来运行电机</li> <li>▶ 可根据需求定制不同电压和更大功率的绕组</li> <li>▶ 可根据需求提供不同尺寸的前轴和尾轴</li> <li>▶ 较高的功率密度和紧凑结构设计</li> <li>▶ 防护等级为IP50, 可根据需求提供更高的等级</li> <li>▶ 长寿命, 免维护, 绝缘等级E</li> </ul> | <ul style="list-style-type: none"> <li>▶ 150W high dynamic 3-phase brushless DC motor 10-poles</li> <li>▶ Additional electronics is needed to run this motor</li> <li>▶ Special voltage and higher power windings available</li> <li>▶ Different shaft size available for both sides on request</li> <li>▶ High power density and compact design.</li> <li>▶ Protection class IP50, higher class available on request</li> <li>▶ Longer lifetime, maintenance-free, insulation class E</li> </ul> |
|---|---|

### 42V数据和曲线--Data and curve of 42V

|   |   |   |   |
|---|---|---|---|
| <p>额定电压<br/>Nominal voltage</p> <p>额定电流<br/>Nominal current</p> <p>额定转矩<br/>Nominal torque</p> <p>额定转速<br/>Nominal speed</p> <p>堵转扭矩<br/>Stall torque</p> <p>空载转速<br/>No load speed</p> | <p>42 VDC</p> <p>4.5 A</p> <p>40 Ncm</p> <p>2860 rpm</p> <p>330 Ncm</p> <p>6320 rpm</p> | <p>转矩常数<br/>Torque constant</p> <p>终端电阻<br/>Terminal resistance</p> <p>终端电感<br/>Terminal inductance</p> <p>峰值电流(2 sec.)<br/>Peak current(2 sec.)</p> <p>转子惯量<br/>Rotor inertial</p> <p>电机重量<br/>Weight of motor</p> | <p>12 Ncm A<sup>-1</sup></p> <p>0.31 Ω</p> <p>3.8 mH</p> <p>27 A</p> <p>172 gcm<sup>2</sup></p> <p>1.8 kg</p> |
|---|---|---|---|



### 尺寸为毫米-Dimensions in mm

